



Synaptive MRI

Everywhere for Everyone

In situations where every second counts, the Synaptive MRI holds the potential to bring MRI closer to the patient to support faster and earlier detection of neurological deficits.



Synaptive

Synaptive MRI

Now is the time to bring MRI to places you never thought possible: to the Emergency Department, ICU, Peri-Operative, or Neurosciences Center.

The overarching challenge for wider utilization of MRI has been accessibility in both critical and acute situations.

The Synaptive MRI has been carefully designed to overcome many of the challenges of cost effectiveness, and workflow optimization to support point-of-care MR imaging.



Care

Designed to improve the safety of patients and operator safety with the inherent advantages of mid-field MR imaging, and by allowing the magnetic field to be turned off when not in use.*

*Data on file.



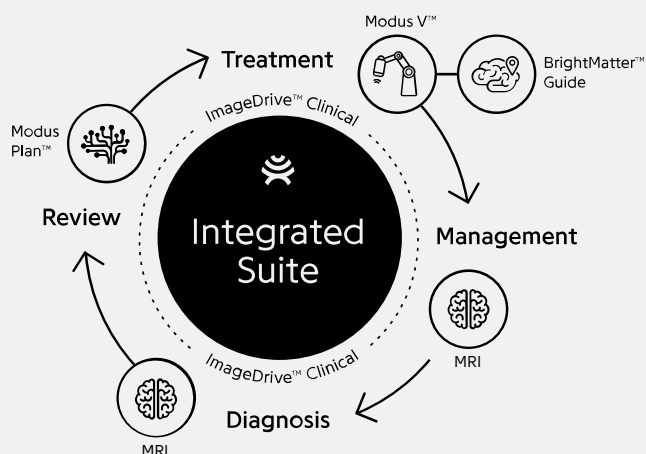
Workflow Optimization

Designed to meet the demands of advanced imaging in acute stroke management by incorporating automatic protocols, scan prescriptions, and a detachable patient table.



Cost-Effectiveness

Designed to reduce the costs associated with siting and servicing high-field MRIs with its small 250 sq ft footprint and cryogen-free superconducting magnet.



THE SYNAPTIVE INTEGRATED SUITE

The Synaptive MRI is designed to support healthcare professionals and systems. The Synaptive Integrated Suite enables precision care through the synergy of high-quality information and cutting-edge automation at all stages of clinical intervention.

OPTIMIZING IMAGING AT MID-FIELD

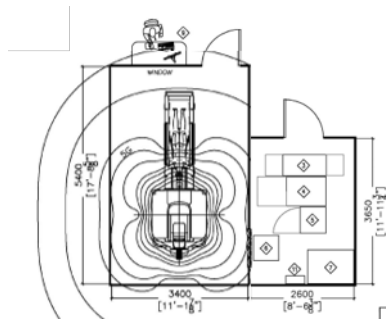
- Highest performing gradients: 100 mT/m at 400 T/m/s on each axis
- 16 channel Head Coil
- Advanced pulse sequences
- T1 (2D and 3D), T2, T2 FLAIR, DWI, T2*, MRA
- Fully digital receiver
- 550 lbs weight limit on detachable stretcher

QUENCH AND HELIUM

- No cryogen venting
- No need for yearly helium refills
- No need for reinforced flooring (< 2000 lbs)
- Install in 250 sq ft area via service elevator (no need for rigging)

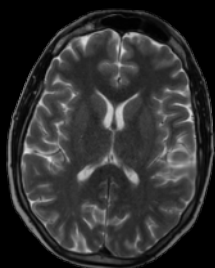
SITING AND SAFETY

- 0.5 T Synaptive MRI
250 sq ft

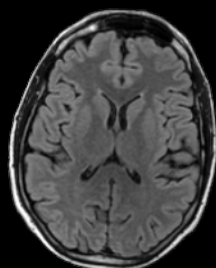


PULSE SEQUENCES

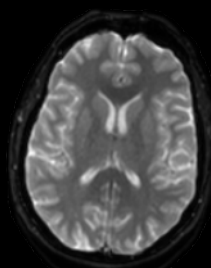
2D and 3D standard and advanced sequences



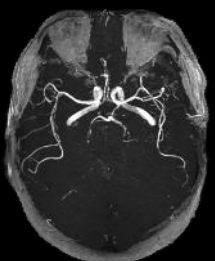
T2



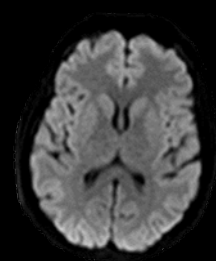
T2 FLAIR



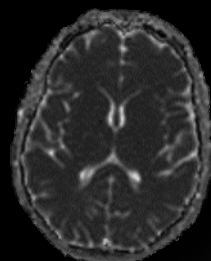
T2*



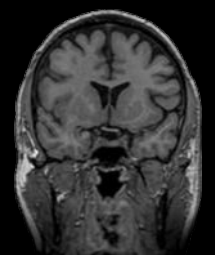
TOF



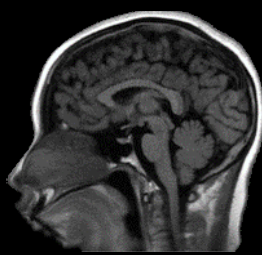
DWI



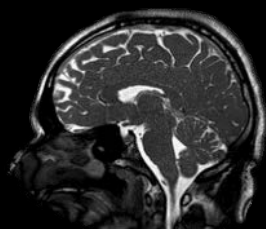
ADC



3D T1



T1 FLAIR



3D SSFP

Synaptive Medical

Toll free: +1.844.462.7246

Toronto: +1.647.925.3435

www.synaptivemedical.com

© Synaptive Medical 2021. All rights reserved. This product may not be approved for medical device use in your jurisdiction. Please contact Synaptive Medical for information on regulatory clearance status in your jurisdiction. Synaptive, the Synaptive logo, Modus Plan, Modus V, BrightMatter, and ImageDrive are trademarks of Synaptive Medical Inc. or its subsidiaries and are protected by law in Canada, the United States, and internationally. All other product and company names mentioned may be trademarks or trade names of their respective owners. Patents pending.

Synaptive

MKT-00734 Rev. C

